



MONTHLY MEMBERSHIP PROGRESS REPORT

District 5M 9

Results as of: 01/31/2018

GMT: MICHAEL MOLEND A

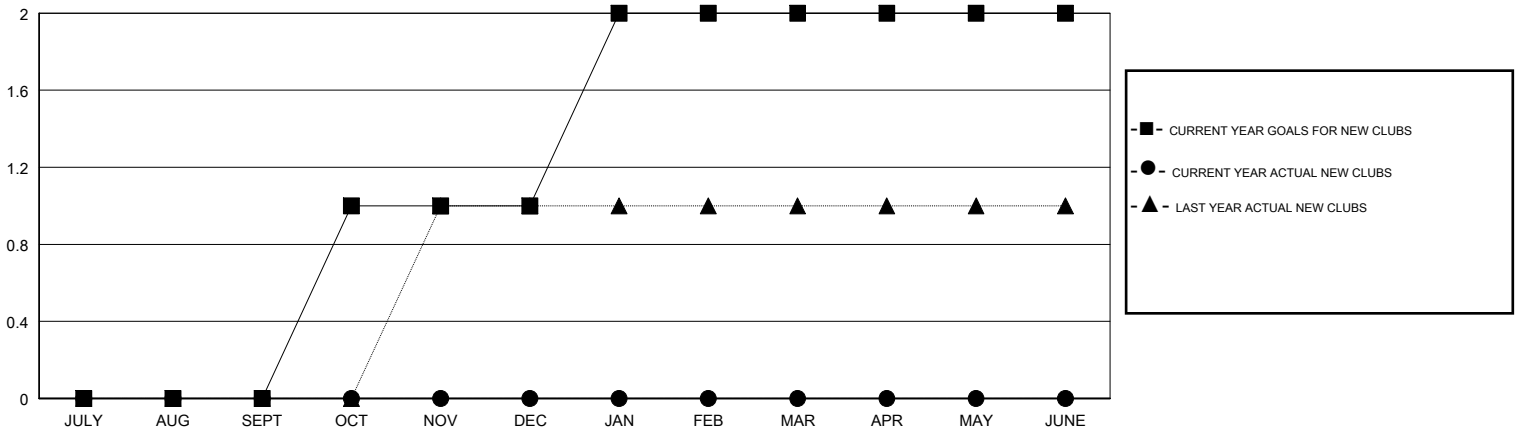
LOCATION MINNESOTA

GMT CA

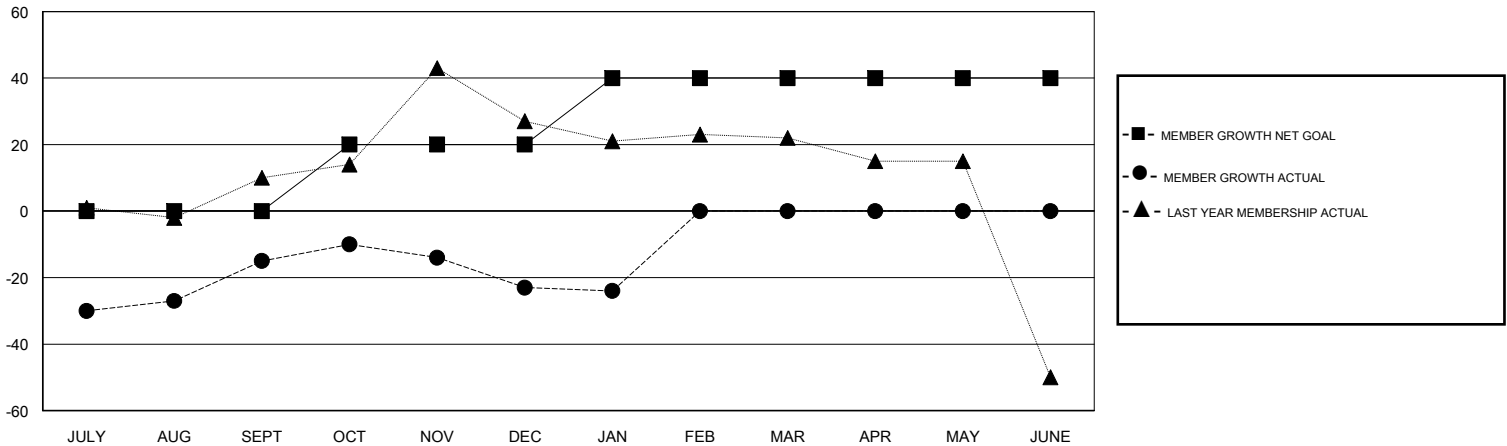
Clubs			
RESULTS FOR 2017-2018			
QUARTER	NEW CLUB GOAL	NEW CLUBS	DROPPED CLUBS
JULY/AUG/SEPT	0	0	0
OCT/NOV/DEC	1	0	0
JAN/FEB/MAR	1	0	0
APR/MAY/JUNE	0	0	0

Members			
RESULTS FOR 2017-2018			
QUARTER	MEMBER GROWTH NET GOAL	MEMBER GROWTH ACTUAL	DROPPED MEMBERS ACTUAL (including transfers)
JULY/AUG/SEPT	0	73	78
OCT/NOV/DEC	20	54	50
JAN/FEB/MAR	20	23	23
APR/MAY/JUNE	0	0	0

GOALS AND ACTUAL NEW CLUBS CUMULATIVE



GOALS AND ACTUAL MEMBERS CUMULATIVE



DROPPED CLUBS: 0	39 CLUBS OF 67 ADDED 1 OR MORE NEW MEMBERS	<u>GENDER DISTRIBUTION</u>	
DROPPED MEMBERS		MALE	1,430 (63.70%)
DECEASED	28	FEMALE	815 (36.30%)
CLUB CANCELLED	0	Women Percentage Fiscal Year Goal: 38%	
OTHER	124	TOTAL FAMILY UNIT MEMBERS	731
TOTAL	152	FAMILY MEMBERS PAYING HALF DUES	368

[CLICK HERE FOR CUMULATIVE MEMBERSHIP DATA](#)